



We have completed our Water Use Survey in your neighborhood . . .

If your home has an underground sprinkling system which uses HCT water, look for additional information to come.

Please review the included brochure for additional ways to . . . KEEP OUR DRINKING WATER SAFE.

To protect your drinking water, we have included **2 Hose Bib Vacuum Breakers**.



Installing these vacuum breakers will allow your home to become compliant with Holland Township Residential Cross Connection Program.

Please Install ASAP!

HOW TO WINTERIZE

If you don't have the self-draining vacuum breaker on your faucet, it requires you to drain the water from the vacuum breaker by:

1. Turning off the water on the inside of the house
2. Remove the hose from the faucet
3. Push the plastic piece in the center to one side to drain the water



Vacuum Breaker **NOT** self-draining

Built In Vacuum Breakers



Screw on Hose Bib Vacuum Breakers are **not** needed on these styles.

Scan for other language options



IF YOU HAVE . . .

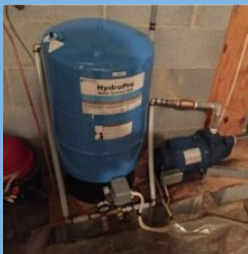
A LAWN IRRIGATION SYSTEM

A testable pressure vacuum breaker (PVB) must be installed on the outside of the home as shown.



AN EXISTING WELL

To avoid contamination of the public system, wells cannot be connected to the same piping as your city water.



DEFINITIONS

Potable — Water safe for drinking, free from contamination.

Backpressure — Occurs when the water pressure in a home increases and is greater than that of the water main.

Backsiphonage — Occurs when supply pressure drops and water is siphoned from the home back into the water main.



**HOW CAN I
KEEP MY WATER
SUPPLY SAFE AT HOME?**

To learn more, visit hct.holland.mi.us

Questions should be directed to:

Public Works Maintenance Department
Holland Charter Township

616.396.1891

Scan for
other
language
options



CROSS CONNECTION INFORMATION

VACUUM BREAKER EXAMPLES

Holland Charter Township is required by the Michigan Department of Environment, Great Lakes, and Energy (EGLE) to ensure all irrigation systems using Holland Township water do not contaminate the potable* water system.

What is Backflow?

Reversal of flow of fluids which could allow chemicals or any other foreign material into the public drinking water system.

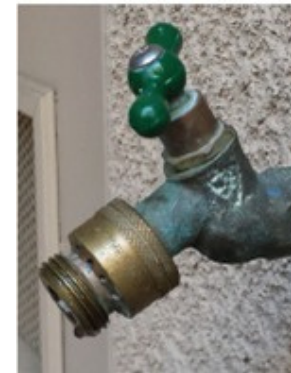
What is a Backflow Preventer?

A device that prevents the reversal of flow, which can occur due to backpressure* or backsiphonage.*

* Definitions on reverse side



Some outdoor spigots have an atmospheric vacuum breaker built in, some must be added.



Above is a spigot with an added vacuum breaker.



Above is a spigot with a built-in vacuum breaker.